

# Westchester County Food Waste Study







# Facts on Food Waste

- Overall, **40 percent** of food in this country is wasted. At the same time, nearly **2.5 million New Yorkers** struggle to have enough to eat.
- Food also makes up **18 percent** of our solid waste stream.
- <https://www.nrdc.org>



## New York State to Start Recycling Food Waste (1)

March 31, 2019, 2:37 PM; Updated: March 31, 2019, 5:38 PM

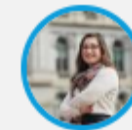


- Large-scale generators of food waste required to donate, sustainably dispose of scraps
- Businesses concerned about cost, duplication of recycling efforts

New York State will boost its food donation and recycling efforts, requiring large generators of food waste to donate edible food and more sustainably dispose of inedible items, under legislation passed March 31 by the state Senate and Assembly.

The legislation was part of the Transportation, Economic Development and Environmental Conservation bill included in the state's \$175.5 billion budget for fiscal 2020. The measure passed the Assembly 100 to 42, and Senate 39 to 22, according to unofficial vote tallies, and now heads for approval to the governor, who is expected to sign it.

The law, commonly known as the Food Recovery and Recycling Act, establishes a "food scraps hierarchy" to help reduce food waste and aid those facing hunger. According to the legislation, an estimated 2.8 million New Yorkers face hunger and food insecurity.



**Keshia Clukey**  
Correspondent



### Related Articles

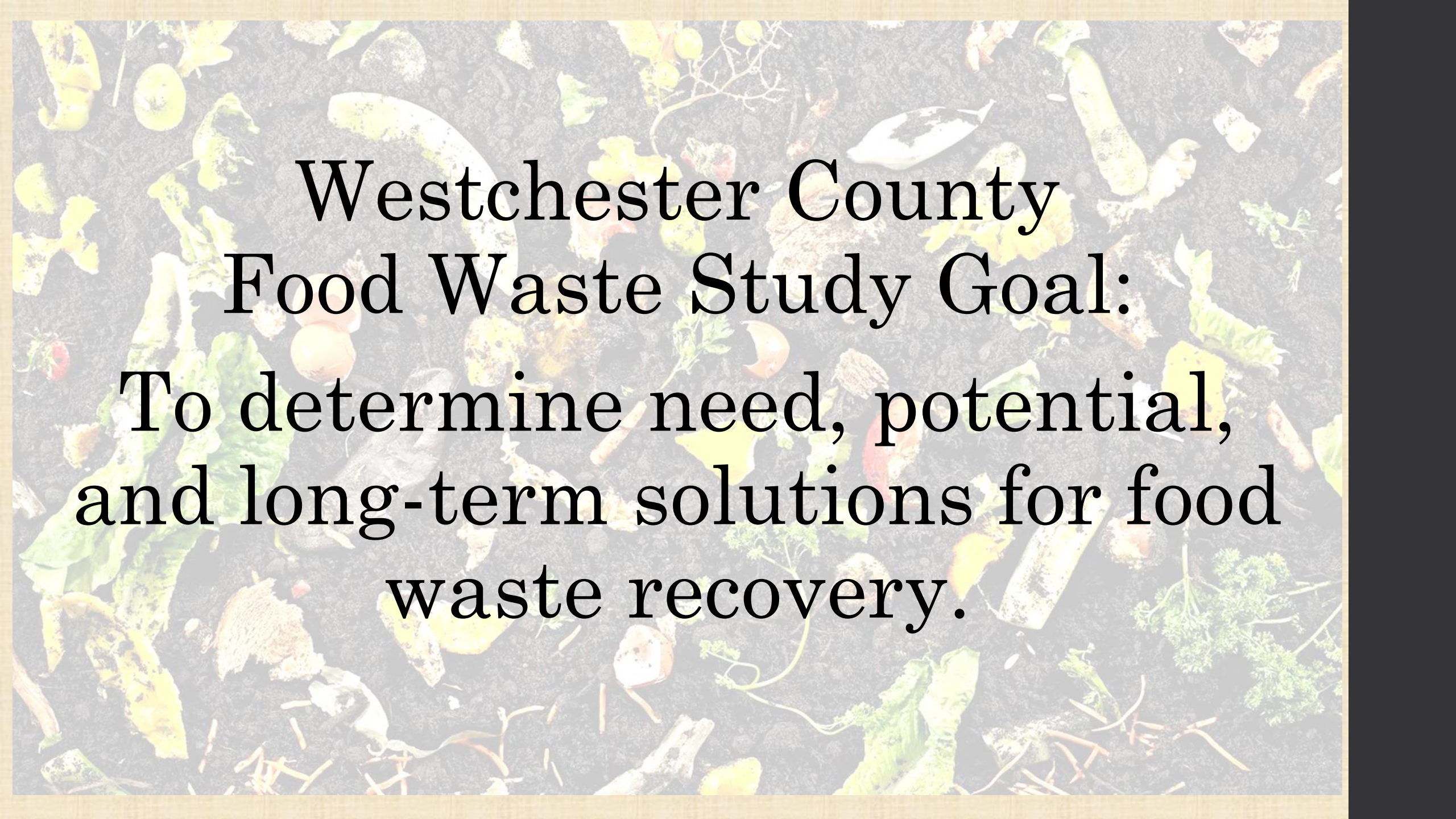
[New York State Bans Single-Use Plastic B...](#)  
(1)

March 31, 2019, 11:26 AM

[Ban on Single-Use Plastic Bags Seen Likel...](#)  
New York State

March 27, 2019, 4:26 PM





Westchester County  
Food Waste Study Goal:  
To determine need, potential,  
and long-term solutions for food  
waste recovery.

# Woodard & Curran Food Waste Analysis

## Commercial Food Waste in Westchester County

- 125,000 tons a year generated
- 103,000 tons a year disposed
- 22,000 tons of food waste recovered yearly  
(being done privately, mostly supermarkets)
- 21% of commercial waste is food waste



# Woodard & Curran Food Waste Analysis

## Residential Food Waste

- 85,537 tons a year generated & disposed
- Unknown how much is being composted
- 22% of residential waste is food scraps

# Woodard & Curran Mid and Long Term Recommendations

- 1- Co-locating a small anaerobic digester next to the Wheelabrator Facility
- 2- Co-digestion at Peekskill Water Resource Recovery Facility
- 3- Locating a large standalone food waste digester in Westchester County





# ACTION STEPS



# Westchester County Food Scrap Recycling Transport and Disposal Program

- County solicits bids for hauler
- Shared Service & potential grants
- Program will be opened to all municipalities
- Two options to pick:
  - 1- Curb side pick-up of food scrap
    - Food Scrap to be transported to hauler's yard
    - Municipality would pay for the pick-up and transportation to the hauler
  - 2 - Municipal collection area drop off
    - Hauler would pick up from location
    - Cost neutral for the municipalities

September  
2020

# Pilot Program - Separate Food Scrap Deliveries

March  
2020

- Exploring workgroup suggestion
- Collect at the Yonkers Transfer Station food scraps from 1 identified Westchester community only
- Scraps hauled to Ulster County for composting
- 6 week pilot program – currently being established



# Westchester County Compost & Education Facility

- Two parts both being housed at the H-MRF at Grasslands
  - Small-Scale composting for a local municipality
  - Education for residents and municipal officials
- Compost created to be given to County residents for free
  - Remainder to be given to County Parks Department
- Potential grants to cover costs

2020

# Westchester County Food Waste Study

