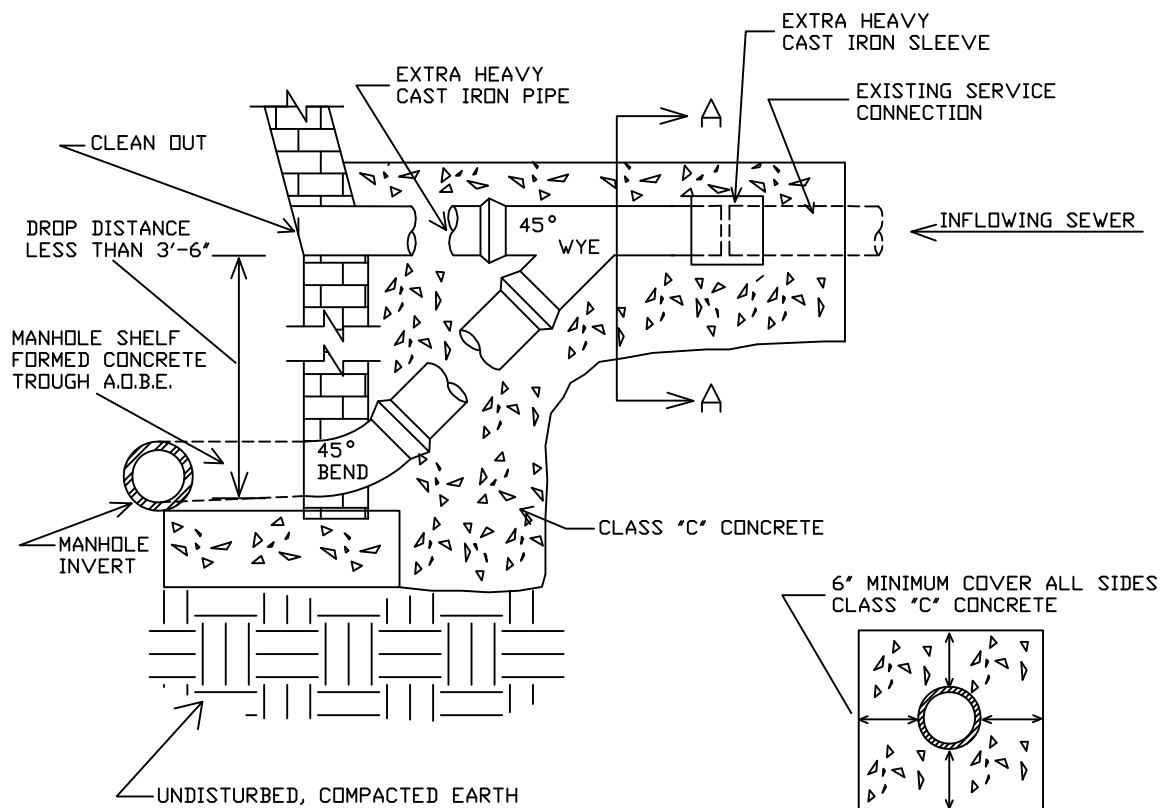


Construction Specifications, Sewers

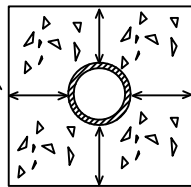
- Sewer Connection To Manhole-Type I Drop Model
- Sewer Connection To Manhole-Type II Drop Model
- Sewer Lateral Connection To Main Model

SANITARY SEWER CONNECTION TO MANHOLE

DROP CONNECTION - TYPE I



6" MINIMUM COVER ALL SIDES
CLASS "C" CONCRETE



SECTION A - A

ENGINEER'S NOTES:

- * SUBMIT ALL PERMITS AND FEES AS PER TOWN LAW.
- * CONTRACTOR SHALL CALL "DIG SAFELY, NEW YORK" AS PER NYS LAW. 1-800-962-7962.
- * CONTRACTOR SHALL USE SAFE OPERATION SHEET PILING AS PER OSHA STANDARDS.
- * ALL SUBGRADE SHALL BE MECHANICALLY COMPACTED @ 95% STD. PROCTOR TEST.
- * UNLESS OTHERWISE SPECIFIED BY THE TOWN ENGINEER, BACKFILL MATERIAL SHALL BE K-CRETE UNSHRINKABLE BACKFILL MATERIAL BENEATH ALL ROAD BEDS AND R.D.W. AREAS.
- * SPACING BETWEEN ADJACENT UTILITY SERVICES SHALL BE AS PER UTILITY GUIDELINES.
- * ALL ABANDONED SEWER CONNECTION SHALL BE CUT OFF, REMOVED AND CAPPED WITH A WATER TIGHT SEWER PLUG.
- * ALL OPENINGS IN THE PAVEMENT SHALL BE SAW CUT A.D.B.E. AND SEALED WITH AN APPROVED BITUMINOUS CRACK SEALANT.
- * ARRANGE FOR INSPECTION WITH HIGHWAY AND/OR BUILDING DEPARTMENTS PRIOR TO PLACEMENT OF BACKFILL AND PRIOR TO PLACEMENT OF ANY HOT MIX ASPHALT CONCRETE.

TELEPHONE (914)-381-7825



TOWN OF MAMARONECK ENGINEERING DEPARTMENT
SANITARY SEWER SPECIFICATIONS

PROPERTY ADDRESS:

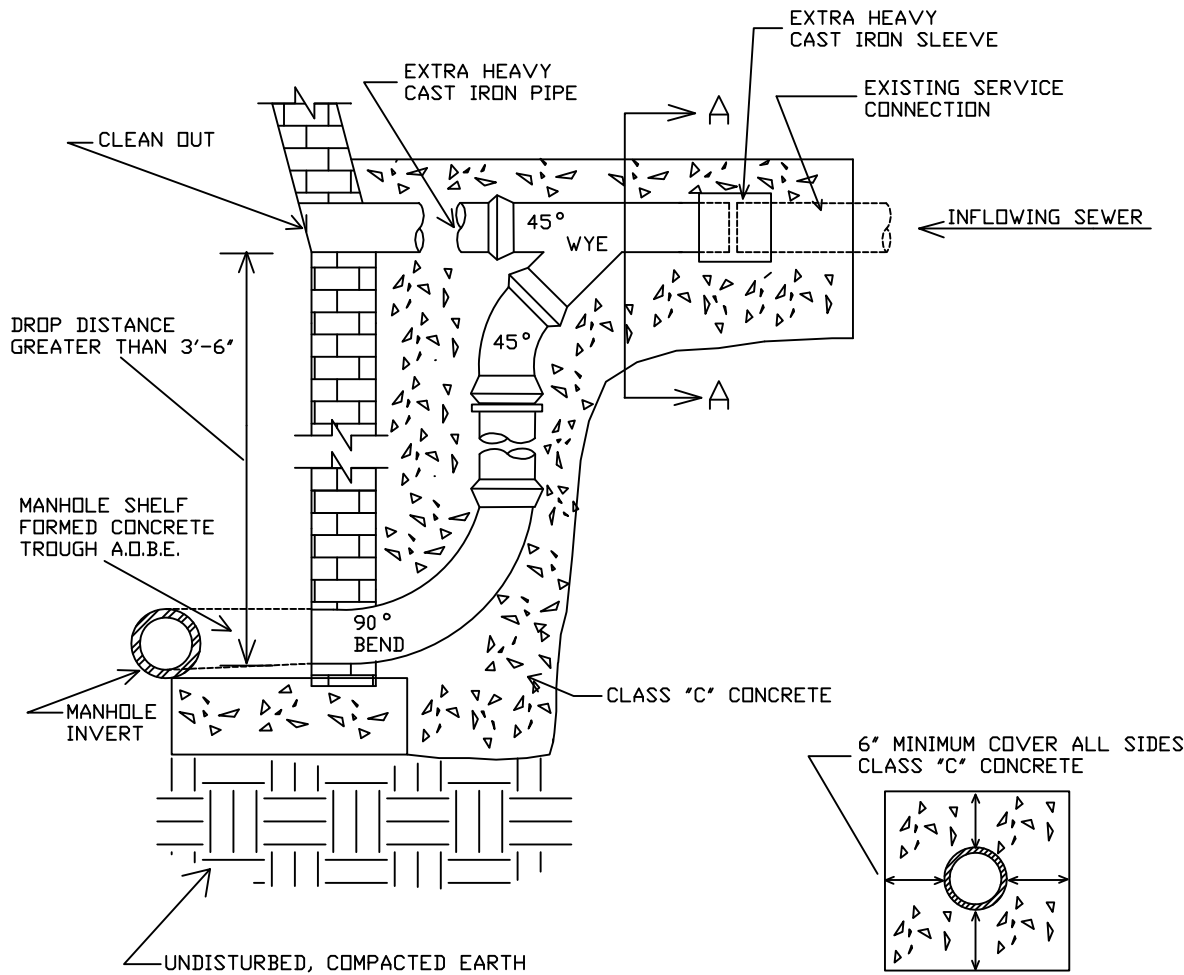
OWNER \ CONTRACTOR:

PERMIT #:

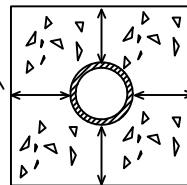
DRAWN BY: DG
 CHECKED BY: MG
 FILE: SEWERJING

SANITARY SEWER CONNECTION TO MANHOLE

DROP CONNECTION - TYPE II



6" MINIMUM COVER ALL SIDES
CLASS "C" CONCRETE



SECTION A - A

ENGINEER'S NOTES:

- * SUBMIT ALL PERMITS AND FEES AS PER TOWN LAW.
- * CONTRACTOR SHALL CALL 'DIG SAFELY, NEW YORK' AS PER NYS LAW. 1-800-962-7962.
- * CONTRACTOR SHALL USE SAFE OPERATION SHEET PILING AS PER OSHA STANDARDS.
- * ALL SUBGRADE SHALL BE MECHANICALLY COMPACTED @ 95% STD. PROCTOR TEST.
- * UNLESS OTHERWISE SPECIFIED BY THE TOWN ENGINEER, BACKFILL MATERIAL SHALL BE K-CRETE UNSHRINKABLE BACKFILL MATERIAL BENEATH ALL ROAD BEDS AND R.O.W. AREAS.
- * SPACING BETWEEN ADJACENT UTILITY SERVICES SHALL BE AS PER UTILITY GUIDELINES.
- * ALL ABANDONED SEWER CONNECTION SHALL BE CUT OFF, REMOVED AND CAPPED WITH A WATER TIGHT SEWER PLUG.
- * ALL OPENINGS IN THE PAVEMENT SHALL BE SAW CUT A.D.B.E. AND SEALED WITH AN APPROVED BITUMINOUS CRACK SEALANT.
- * ARRANGE FOR INSPECTION WITH HIGHWAY AND/OR BUILDING DEPARTMENTS PRIOR TO PLACEMENT OF BACKFILL AND PRIOR TO PLACEMENT OF ANY HOT MIX ASPHALT CONCRETE.

TELEPHONE (914)-381-7825



TOWN OF MAMARONECK ENGINEERING DEPARTMENT
SANITARY SEWER SPECIFICATIONS

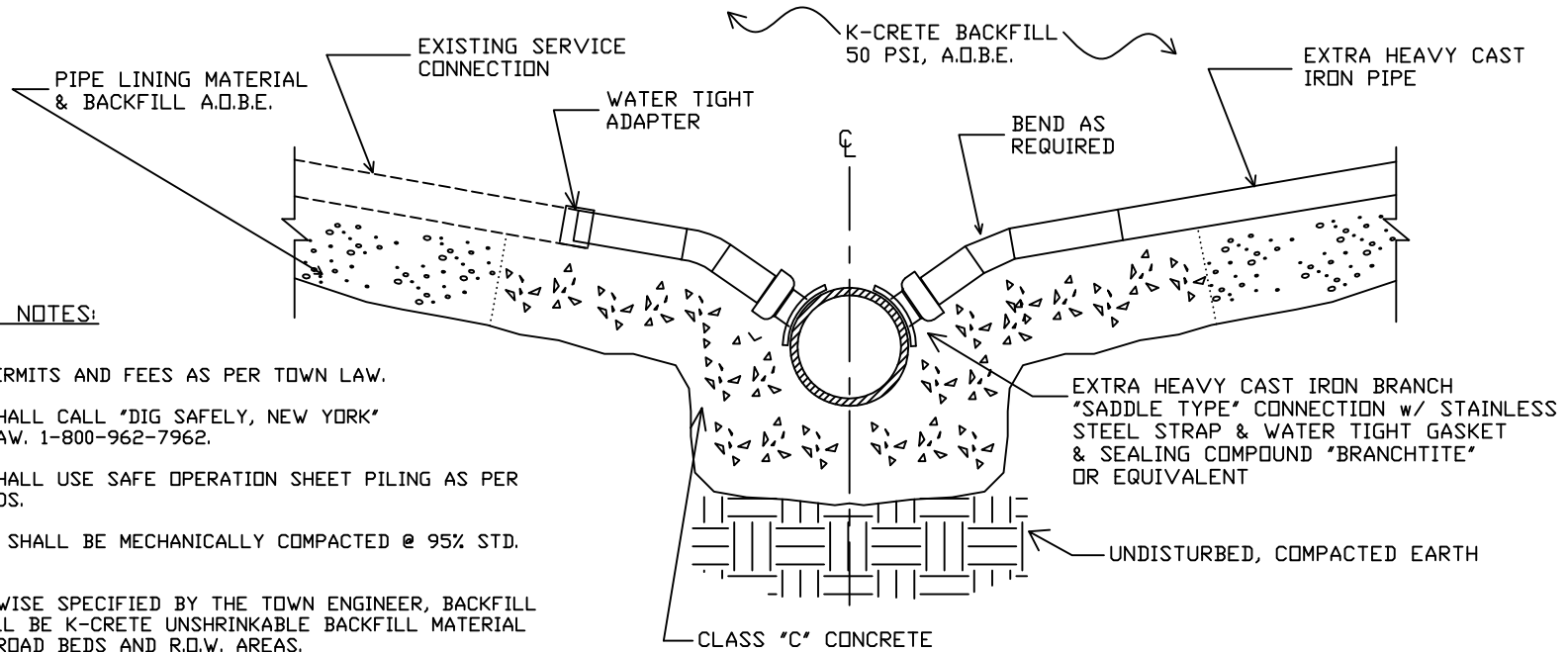
PROPERTY ADDRESS:

OWNER \ CONTRACTOR:

PERMIT #:

SANITARY SEWER CONNECTION TO MAIN LINE

NO SCALE

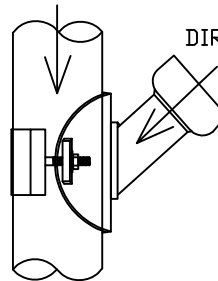


ENGINEER'S NOTES:

- * SUBMIT ALL PERMITS AND FEES AS PER TOWN LAW.
- * CONTRACTOR SHALL CALL "DIG SAFELY, NEW YORK" AS PER NYS LAW. 1-800-962-7962.
- * CONTRACTOR SHALL USE SAFE OPERATION SHEET PILING AS PER OSHA STANDARDS.
- * ALL SUBGRADE SHALL BE MECHANICALLY COMPACTED @ 95% STD. PROCTOR TEST.
- * UNLESS OTHERWISE SPECIFIED BY THE TOWN ENGINEER, BACKFILL MATERIAL SHALL BE K-CRETE UNSHRINKABLE BACKFILL MATERIAL BENEATH ALL ROAD BEDS AND R.O.W. AREAS.
- * SPACING BETWEEN ADJACENT UTILITY SERVICES SHALL BE AS PER UTILITY GUIDELINES.
- * ACCESS HOLE TO EXISTING MAIN SHALL BE MARKED w/ TEMPLATE, PRE-DRILLED w/ 7/16" CLOSELY SPACED HOLES, KNOCKED OUT & EDGES FILED CLEAN. HOLE TO BE INSPECTED BY TOWN ENGINEER BEFORE SADDLE INSTALLED. CLEAN ALL DEBRIS FROM SANITARY MAIN.
- * ALL ABANDONED SEWER CONNECTION SHALL BE CUT OFF, REMOVED AND CAPPED WITH A WATER TIGHT SEWER PLUG.
- * ALL OPENINGS IN THE PAVEMENT SHALL BE SAW CUT A.O.B.E. AND SEALED WITH AN APPROVED BITUMINOUS CRACK SEALANT.
- * ARRANGE FOR INSPECTION WITH HIGHWAY AND/OR BUILDING DEPARTMENTS PRIOR TO PLACEMENT OF BACKFILL AND PRIOR TO PLACEMENT OF ANY HOT MIX ASPHALT CONCRETE.

TELEPHONE (914) 381-7825

FLOW
DIRECT FLOW A.O.B.E.



PLAN VIEW



TOWN OF MAMARONECK ENGINEERING DEPARTMENT
SANITARY SEWER SPECIFICATIONS

PROPERTY ADDRESS:

OWNER \ CONTRACTOR:

PERMIT #:

DRAWN BY: DG, CHECKED BY: MG, FILE: SEWERLJNG